



## **The Neighbourhood Planning (Referendums) Regulations 2012**

### **Regulation 4 Information Statement**

## **Lickey & Blackwell and Cofton Hackett Neighbourhood Plan Referendum**

### **1. About this statement**

A referendum on the Lickey & Blackwell and Cofton Hackett Neighbourhood Plan will be held on **Thursday 12<sup>th</sup> December 2019**. This statement provides information on the referendum that is taking place, and the neighbourhood plan it relates to.

### **2. Referendum on the Lickey & Blackwell and Cofton Hackett Neighbourhood Plan**

A referendum asks you to vote 'yes' or 'no' to a question. The question which will be asked in the referendum is:

Do you want Bromsgrove District Council to use the Neighbourhood Plan for Lickey & Blackwell and Cofton Hackett Parishes to help it decide planning applications in the neighbourhood area?

If more than 50% of individuals vote 'yes' in the referendum, then Bromsgrove District Council will 'make' the Lickey & Blackwell and Cofton Hackett Neighbourhood Plan. If the Neighbourhood Plan is 'made' it will help determine planning applications in the Lickey & Blackwell and Cofton Hackett Neighbourhood Area. It will thus form part of the statutory development plan for Bromsgrove District.

If more people vote 'no' than 'yes' then the Lickey & Blackwell and Cofton Hackett Neighbourhood Plan will not be made part of the statutory development plan for the neighbourhood area.

### **3. What is a neighbourhood area?**

The neighbourhood area for Lickey & Blackwell and Cofton Hackett is identified on the map shown in Annex 1 at the end of this information statement. The boundary of the neighbourhood area was approved by Bromsgrove District Council in October 2014 and replicates the boundary of Lickey & Blackwell Parish and Cofton Hackett Parish.

The referendum voting area is identical to the area which has been designated as the Lickey & Blackwell and Cofton Hackett Neighbourhood Area. The independent examination of the Neighbourhood Plan recommended that the plan proceed to a referendum based on the extent of the designated neighbourhood area.

#### **4. Am I entitled to vote in the referendum?**

A person is entitled to vote in the referendum if:

- they are registered to vote in a local council elections in the referendum area; and
- they are 18 years of age or over on 12<sup>th</sup> December 2019.

You have to be registered to vote by Tuesday 26<sup>th</sup> November 2019 to vote in the referendum. You can check if you are registered to vote by calling 01527 881421.

The referendum will be conducted based in accordance with procedures similar to those used at local government elections.

#### **5. How do I vote in the referendum?**

There are three ways to vote in the referendum:

##### **In person on 12<sup>th</sup> December 2019:**

- At your local polling station; you will receive a poll card via post in advance of the referendum date, confirming your local polling station for this referendum.
- If you do not receive your poll card, you can contact the District Council on 01527 881421 or email us at [elections@bromsgroveandredditch.gov.uk](mailto:elections@bromsgroveandredditch.gov.uk) to find out where your nearest polling station is.
- The polling station(s) will be open from 7am to 10pm on the day of the referendum.

##### **By post:**

- If you have a postal vote already, you will receive a poll card confirming this.
- To set up a postal vote, you will need to complete an application form and send it to the Electoral Registration Officer to arrive by 5pm on Wednesday 27<sup>th</sup> November 2019 at the following address:

Shared Electoral Services  
Bromsgrove and Redditch Councils  
Town Hall  
Walter Stranz Square

Redditch  
B98 8AH

- Postal votes can be sent overseas but you will need to think about whether you will have time to receive and return your completed postal vote by the 12<sup>th</sup> December 2019.
- You should receive your postal vote about a week before polling day for the referendum. If it does not arrive in time, you can ask for a replacement up to 5pm on 12<sup>th</sup> December 2019 by contacting the Council on 01527 881421.

**By proxy:**

- If you have a proxy vote already, you will receive a poll card confirming this.
- If you can't get to the polling station and don't wish to vote by post, you may be able to vote by proxy. This means allowing somebody that you trust to vote on your behalf.
- To vote by proxy, you will need to complete an application form and send it to the Electoral Registration Officer to arrive by 5pm on Wednesday 4<sup>th</sup> December 2019 at the following address:

Shared Electoral Services  
Bromsgrove and Redditch Councils  
Town Hall  
Walter Stranz Square  
Redditch  
B98 8AH

- When you apply for a proxy vote, you must say why you cannot vote in person.
- Anyone can be your proxy as long as they are eligible to vote and are willing to vote on your behalf. You will need to tell them how you want to vote in the referendum.

Postal and proxy vote application forms are available from our helpline on 01527 881421 or by emailing [elections@bromsgroveandredditch.gov.uk](mailto:elections@bromsgroveandredditch.gov.uk)  
You can also download application forms from the electoral commission's website at [www.yourvotematters.co.uk/how-do-i-vote/voting-by-post](http://www.yourvotematters.co.uk/how-do-i-vote/voting-by-post)

**6. What are the referendum documents and where can you view them?**

There are a number of documents that are available to view during the referendum period. These are listed below:

- The referendum version (as modified) of the Lickey & Blackwell and Cofton Hackett Neighbourhood Development Plan;
- The independent examiner's report on the Lickey & Blackwell and Cofton Hackett Neighbourhood Development Plan;
- A summary of representations made on the Lickey & Blackwell and Cofton Hackett Neighbourhood Development Plan which were submitted to the independent examiner;
- A Decision Statement from the District Council which confirms the Neighbourhood Plan meets the basic conditions and other legislative requirements;
- A statement setting out general information regarding town and country planning, including neighbourhood planning, and the referendum.

A hard copy of the above documents and this Information Statement can be inspected at the following locations:

- Bromsgrove Library, Parkside, Market Street, Bromsgrove, B61 8DA  
(Monday 9am-7pm, Tuesday-Friday 9am-5pm, Saturday 10am-4pm)
- Council Offices, Town Hall, Walter Stranz Square, Redditch, B98 8AH  
(Monday-Friday 9am-5pm)

In addition, all of the documents can be viewed online on the District Council's website at <https://www.bromsgrove.gov.uk/lbchnp> or the Parish Council neighbourhood plan website at <https://www.lickeyandblackwellpc.org/>

In addition to the above listed documents, neighbourhood plan supporting information including a Basic Conditions Statement, Consultation Statement and Evidence Base Summary document, can also be viewed online.

## **7. Referendum Expenses**

Expenses can be incurred by an individual or body for referendum purposes in advance of the referendum.

The referendum expenses limit that will apply in relation to this referendum is £2672.28. The number of persons entitled to vote in the referendum is 5,259.

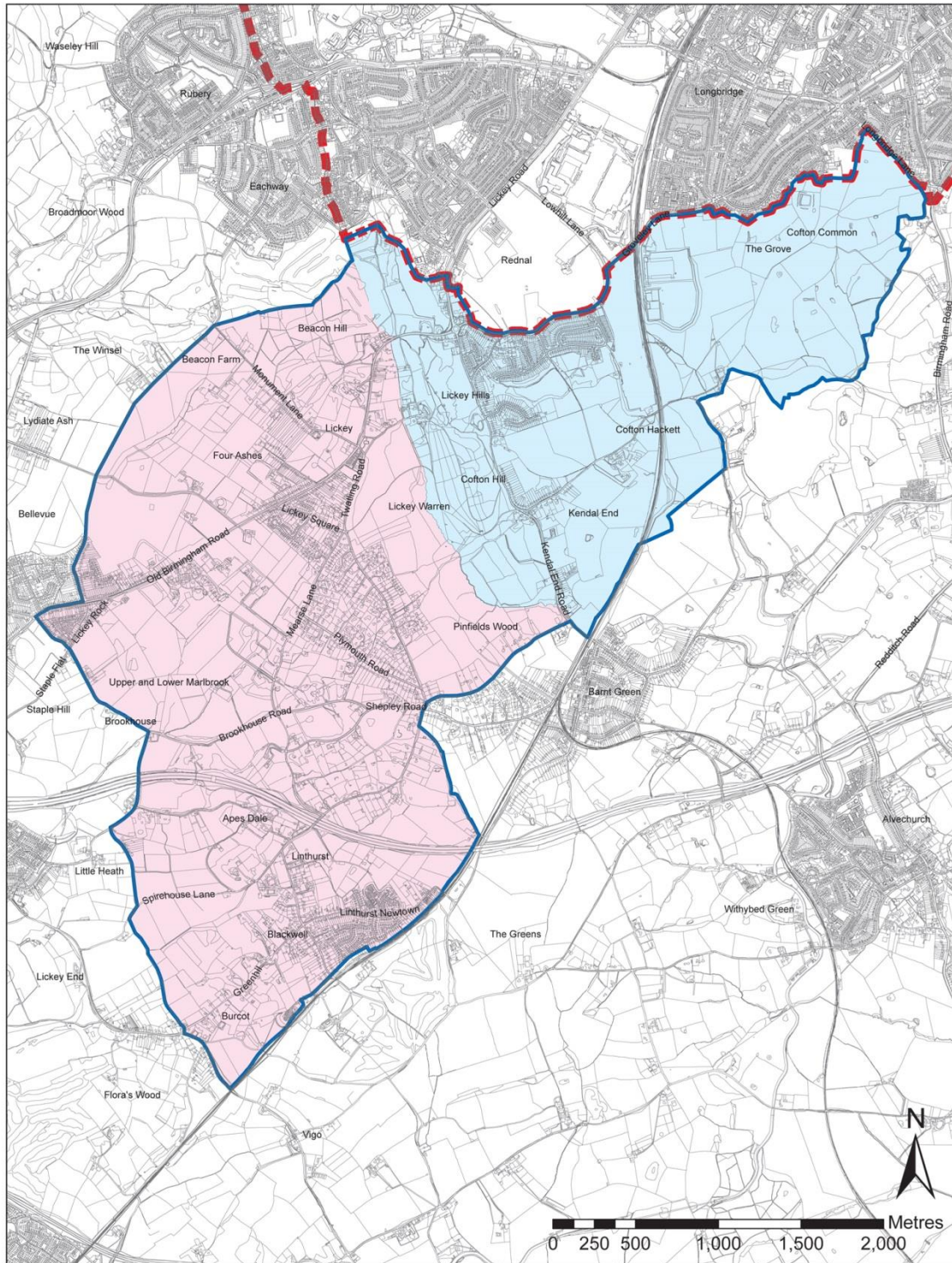
## **8. How to find out more**

Further general information on neighbourhood planning is available on the District Council's website at <http://www.bromsgrove.gov.uk/council/policy-and-strategy/planning-policies/neighbourhood-plans.aspx>

For any other queries regarding the neighbourhood plan, please contact the Strategic Planning team at the District Council on 01527 587010 or [strategicplanning@bromsgroveandredditch.gov.uk](mailto:strategicplanning@bromsgroveandredditch.gov.uk)

For any other queries regarding the referendum process, including how to vote, please contact the District Council's Electoral Services on 01527 881421.

# Annex 1 - Map of Neighbourhood Area and Referendum Area



## Lickey and Blackwell and Cofton Hackett Proposed Neighbourhood Area

Scale 1:21,000

© Crown Copyright and database rights 2014. Ordnance Survey 100023519.

- Lickey and Blackwell Parish
- Cofton Hackett Parish
- Neighbourhood Area Boundary
- District Boundary



**Bromsgrove**  
District Council

[www.bromsgrove.gov.uk](http://www.bromsgrove.gov.uk)